

# Restoring Maryland 4-H In-Person Programs

## Baseline Conditions

**Faculty/Staff** In-Person Maryland 4-H Programs to resume March 1, 2021  
**UME 4-H Volunteer** pre-approved In-Person Activities to resume April 1, 2021



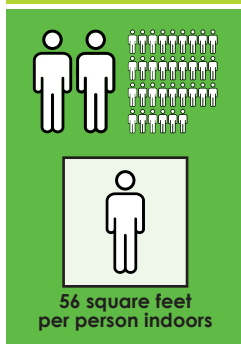
### LOCATION

- 4-H Activity may be held outdoors or indoors.
- **Outdoors:** Space must be large enough to allow physical distancing
  - **Indoors:** Space must provide 56 square feet per participant



### DIRECTIVES

4-H Activity must comply with state and local directives for indoor or outdoor gatherings.



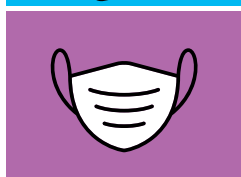
### SIZE

- 4-H Activity may not exceed 35 people per group (140 total with multiple groups).\* This includes at least 2 UME Volunteers or 4-H Faculty/Staff leaders.
- Outdoors:**
- 2 or more = UME Volunteer/4-H Faculty/Staff Leaders
  - Up to 33 = 4-H Members, parents, others
- Indoors:** Depends on size of the indoor space. Limited to how many people the room can hold, allowing **56 square feet** of physical distance space **per person**.
- Maximum group size: Room size (sq ft) ÷ 56 sq ft = Max # people
  - 2 or more = UME Volunteer/4-H Faculty/Staff Leaders
  - Up to maximum group size, no more than 33 = 4-H Members, parents, others



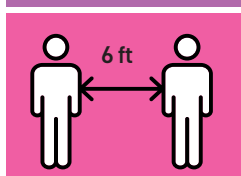
### HEALTH PLEDGE

All youth and adults must complete a health pledge certifying they are well enough to participate in the 4-H Activity.



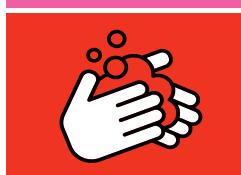
### FACE COVERING

All participants must wear appropriate face coverings during the 4-H Activity, as recommended by the CDC.



### PHYSICAL DISTANCING

Participants must stay at least 6 feet apart throughout the 4-H Activity.



### HAND HYGIENE

All 4-H Activity participants must have access to supplies for hand hygiene (hand sanitizer, sink with soap and water, etc).



### CLEANING

Cleaning and sanitizing supplies must be available. High-touch surfaces and shared equipment or materials must be sanitized.